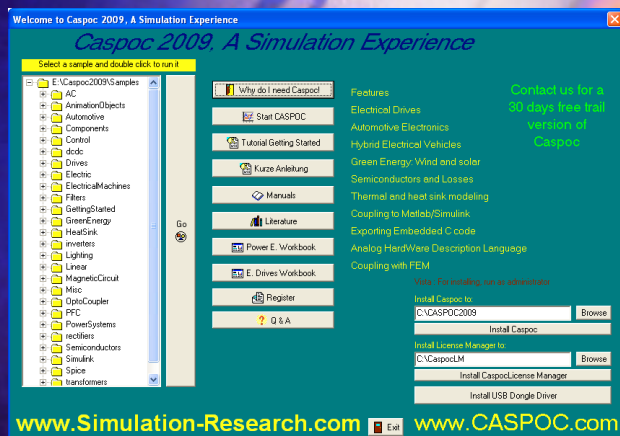
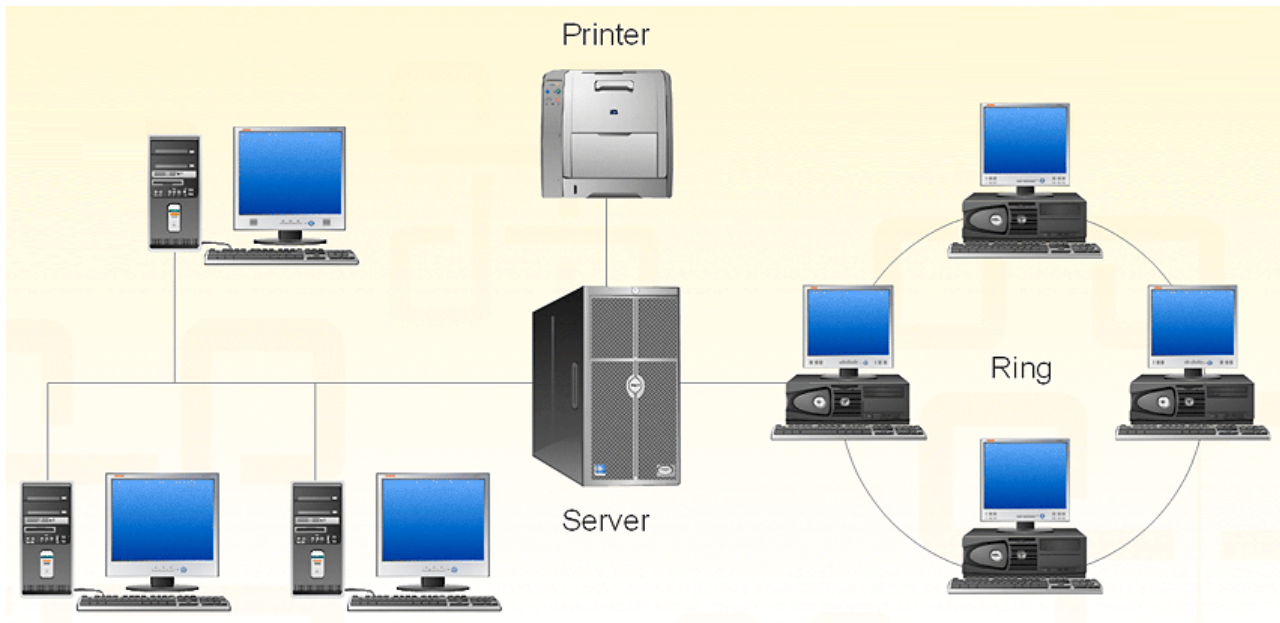


CASPOC LICENSE MANAGER

Campus and ClassRoom
installation instructions



Campus and ClassRoom installation instructions



Step I

There are two methods for installing the CASPOC License Manager

- 1 USB dongle method
- 2 Run the license manager program from the USB dongle
- 1 Server PC method
- 2 First install the license manager to the hard disk of the server PC and run the license manager from the server PC. (Install the license file and restart the license manager)

Step II

Select the shared folder for the communication between the license manager and the Caspoc client software.

Step III

Install the Caspoc clients on each client PC

Step IV

Connect each Caspoc client to the shared folder for communication with license manager

Step V

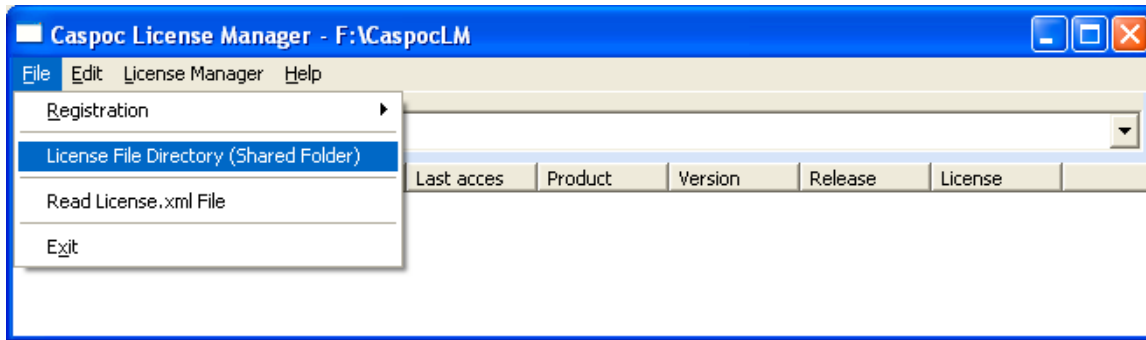
Run the license manager and start each Caspoc client

USB dongle method

Installing the license manager to run from USB dongle

Start the license manager from the usb dongle by starting the program

X:/CaspocLM/caspocLM.exe



Specify the path for the file exchange by selecting:

File / License File Directory

And select the shared folder on your server PC

Please note that the shared folder should **NOT** be on the USB dongle, since reading and writing on the usb flash memory is slow and limited.

The file name for the shared folder is stored in the file *PathLicenseFile.xml* on the usb dongle in the folder x:\caspocLM

Each time you insert the dongle in the server and start the license manager by running the program x:\caspocLM\caspocLM.exe, the shared folder is read from this file.

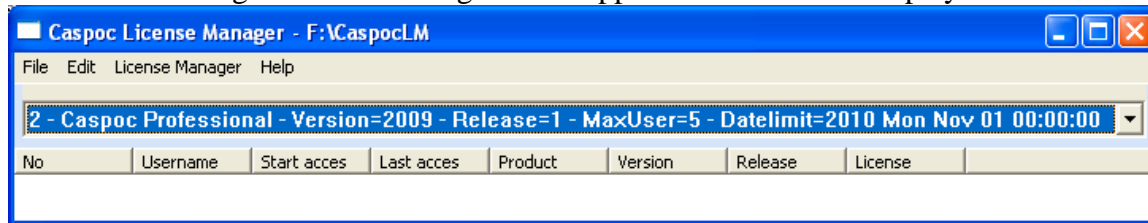
USB dongle method

Running the license manager from the USB dongle

Make sure the dongle is inserted in the server PC. Start the license manager by running the program `x:\caspocLM\caspocLM.exe`

The shared folder is read from the file *PathLicenseFile.xml* on the usb dongle in the folder `x:\caspocLM`

The license manager is now running and the upper window should display the license:



Main difference with previous versions

USB dongle method

Previous versions:

In the previous versions the blue usb dongle did not have any programs installed. The program was installed on the server PC and was running from the server PC.

New versions:

In the new version the main difference is that the program `caspocLM.exe` is run directly from the usb dongle.

Note!

The shared folders should remain on the Hard disk of the server PC!

Server PC method

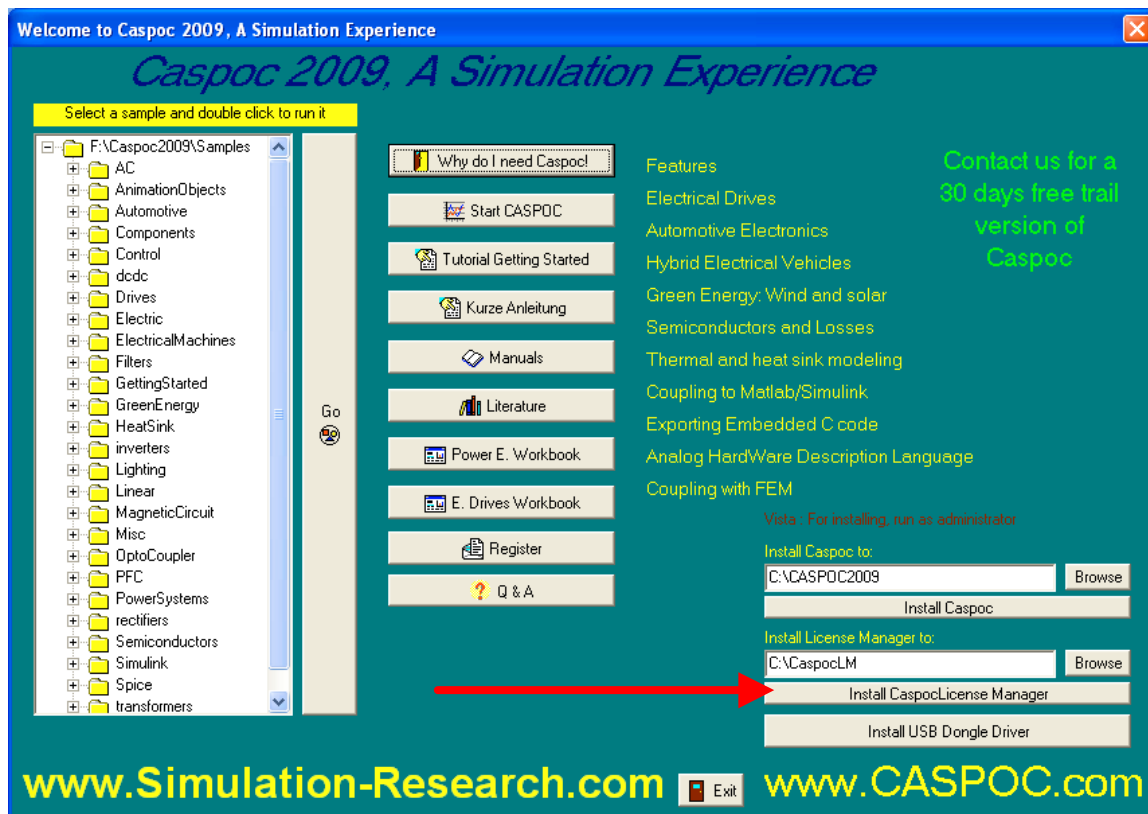
Installing the license manager to run from the server PC

First install the license manager on the hard disk by copying the file

X:/CaspocLM/caspocLM.exe

to your local hard disk on the server PC into a folder *C:\CaspocLM*

Clicking the install button [Install Caspoc License Manager] on the welcome screen can also do this:

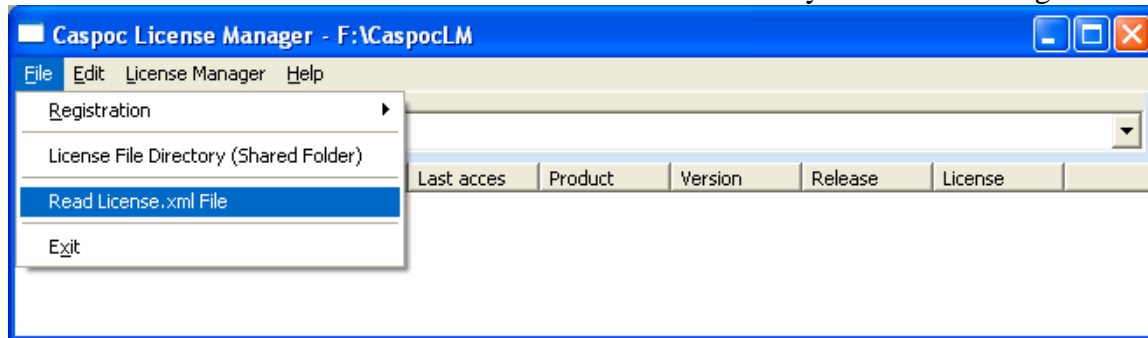


Starting the Caspoc License Manager from the server PC

Start the license manager from the server PC by starting the program

C:/CaspocLM/caspocLM.exe

Since the license file is on the usb dongle, you have to tell the Caspoc license manager where the license file is. This is done by selecting the menu item ***File/Read License.xml File*** and select the folder where the license.xml file is. For new installations, this file is on the USB dongle inside the X:\CaspocLM folder, where X is the drive letter of the USB dongle. Please note that when restoring the USB dongle to the server PC, to use the same USB slot, in order to have the same USB drive letter. The license.xml file has to stay on the USB dongle.



Restart CaspocLM.exe after selection of the license file

Main difference with previous versions

PC Server method

Previous versions:

In the previous versions the blue usb dongle did not have any programs installed. The program and license was installed on the server PC and was running from the server PC.

New versions:

In the new version the main difference is that the license.xml file remains on the usb dongle.

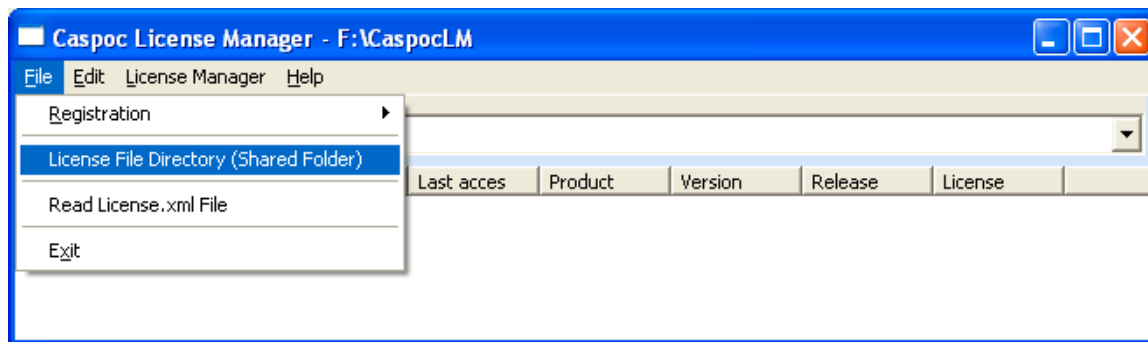
Note 1!

You have to specify inside the license manager where the license.xml file is to be found (X:\CaspocLM\)

Note2!

The shared folders should remain on the Hard disk of the server PC!

Specify the shared folder



Specify the path for the file exchange by selecting:

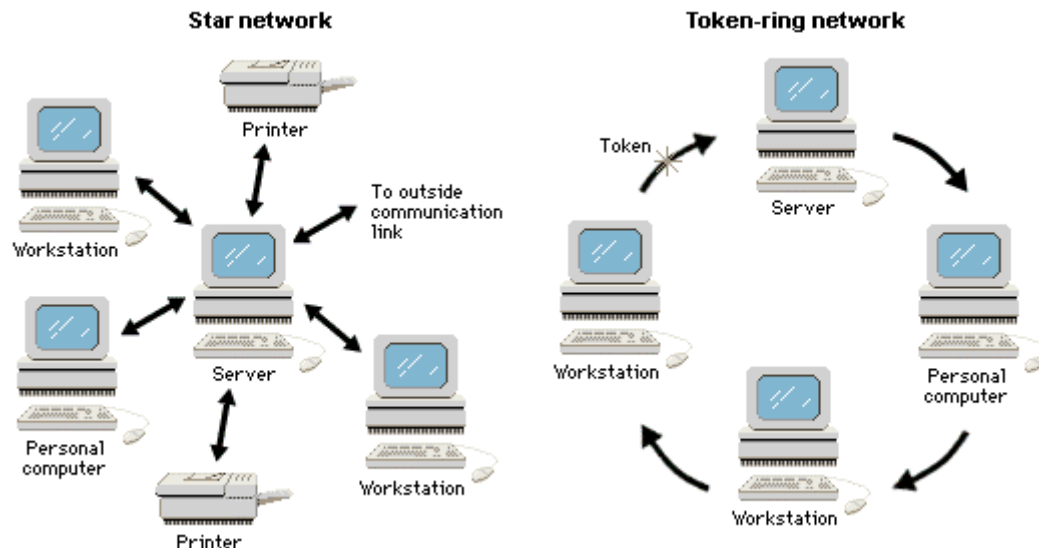
File / License File Directory

And select the shared folder on your server PC

Please note that the shared folder should **NOT** be on the USB dongle, since reading and writing on the usb flash memory is slow and limited.

The file name for the shared folder is stored in the file *PathLicenseFile.xml* on the usb dongle in the folder x:\caspocLM

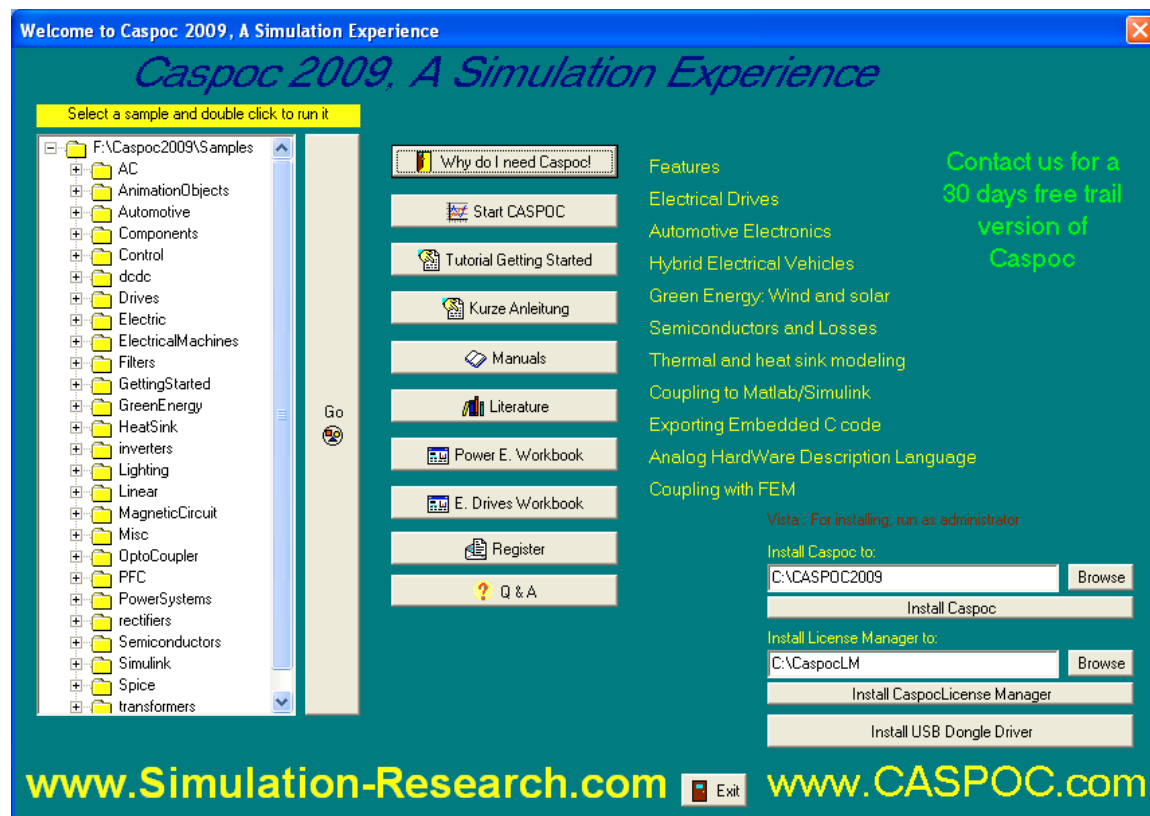
Each time you insert the dongle in the server and start the license manager by running the program x:\caspocLM\caspocLM.exe, the shared folder is read from this file.



Installation Caspoc Client on each PC:

Install the program from the main welcome screen by starting the program welcome####.exe and clicking the install button

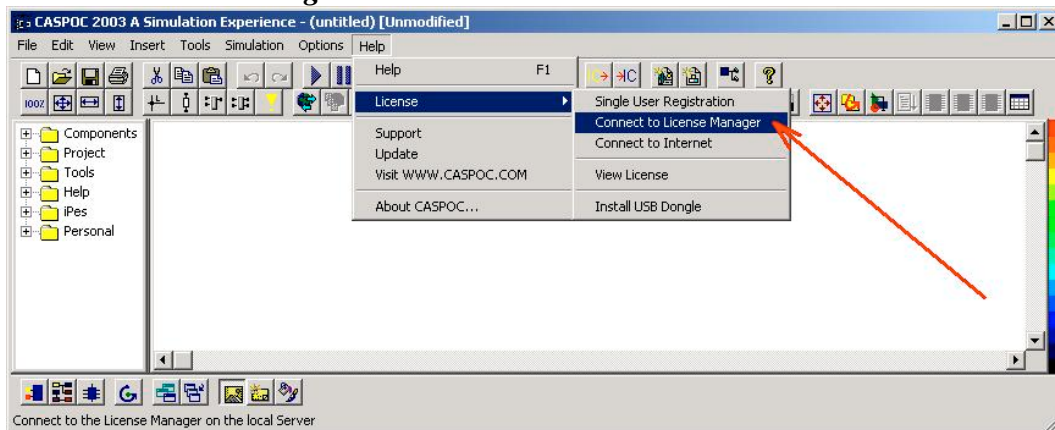
Caspoc Simulation Program installation



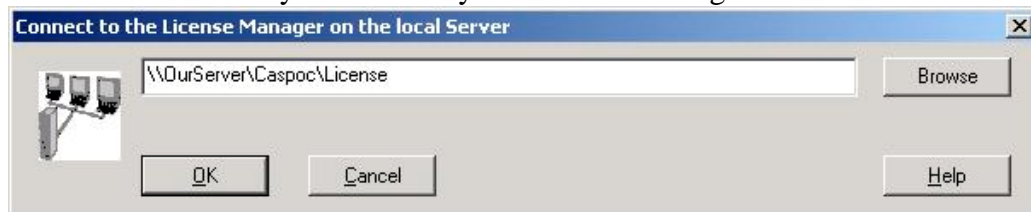
1. Enter the USB dongle in your computer
2. Wait for the welcome screen to appear (if it is not appearing, start the program welcome####.exe)
3. Specify an installation folder at "Install Caspoc to", or select [Browse] to select such a folder
4. Click the installation button [Install Caspoc]
5. If the installation was successful the Viewer / FreeWare is installed and can be started from the start menu or by running Caspoc####.exe.

Connecting Caspoc to license manager

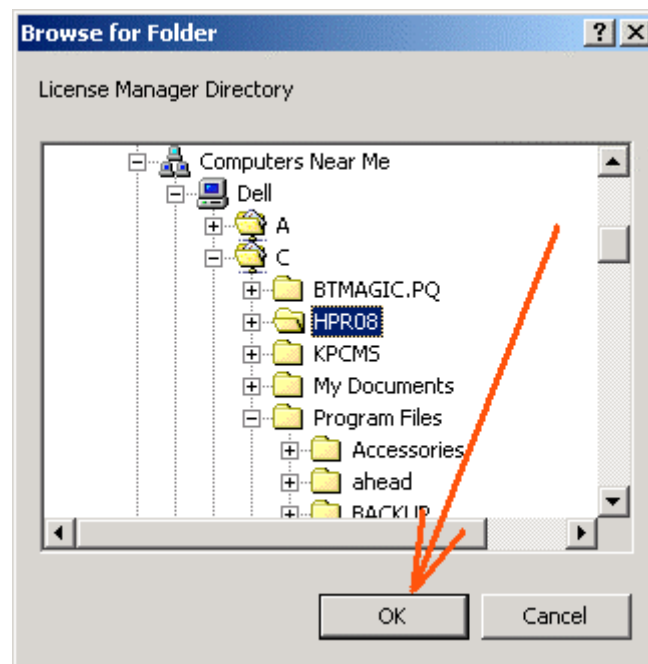
1. After installation connect to the shared directory from the menu item **Help / License / Connect to License Manager**



2. Select the shared directory as defined by the License Manager.



3. Select the shared directory.



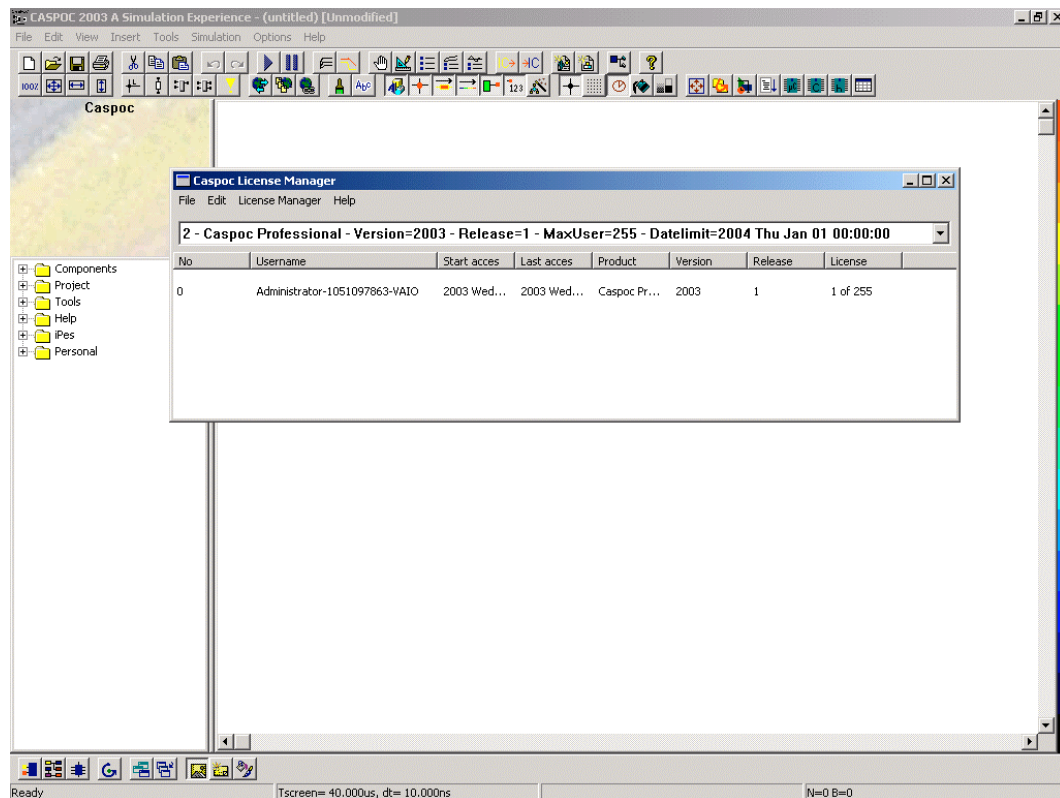
Click [OK] to accept the shared directory

4. Restart Caspoc by selecting Caspoc*.exe from the start menu Programs.
If the maximum number of users is reached or no License Manager is running, the dialog box for connecting to the License Manager is displayed.



Selecting [Cancel] will bypass the license and Caspoc will start as Viewer / FreeWare

5. If a Caspoc#### Client is started successfully, the client identification appears in the Caspoc License Manager window:



Note!

*Registration is not required when connecting to the License Manager.

The Client and Server software need a shared directory where the license files are exchanged. Both the Client and Server software need read and write permission to this directory. (Contact your system administrator)

If a Caspoc#### Client is started, the client identification appears in the Caspoc License Manager window:

The shared directory can be changed in Caspoc by selecting **Help / License / Connect to License Manager**